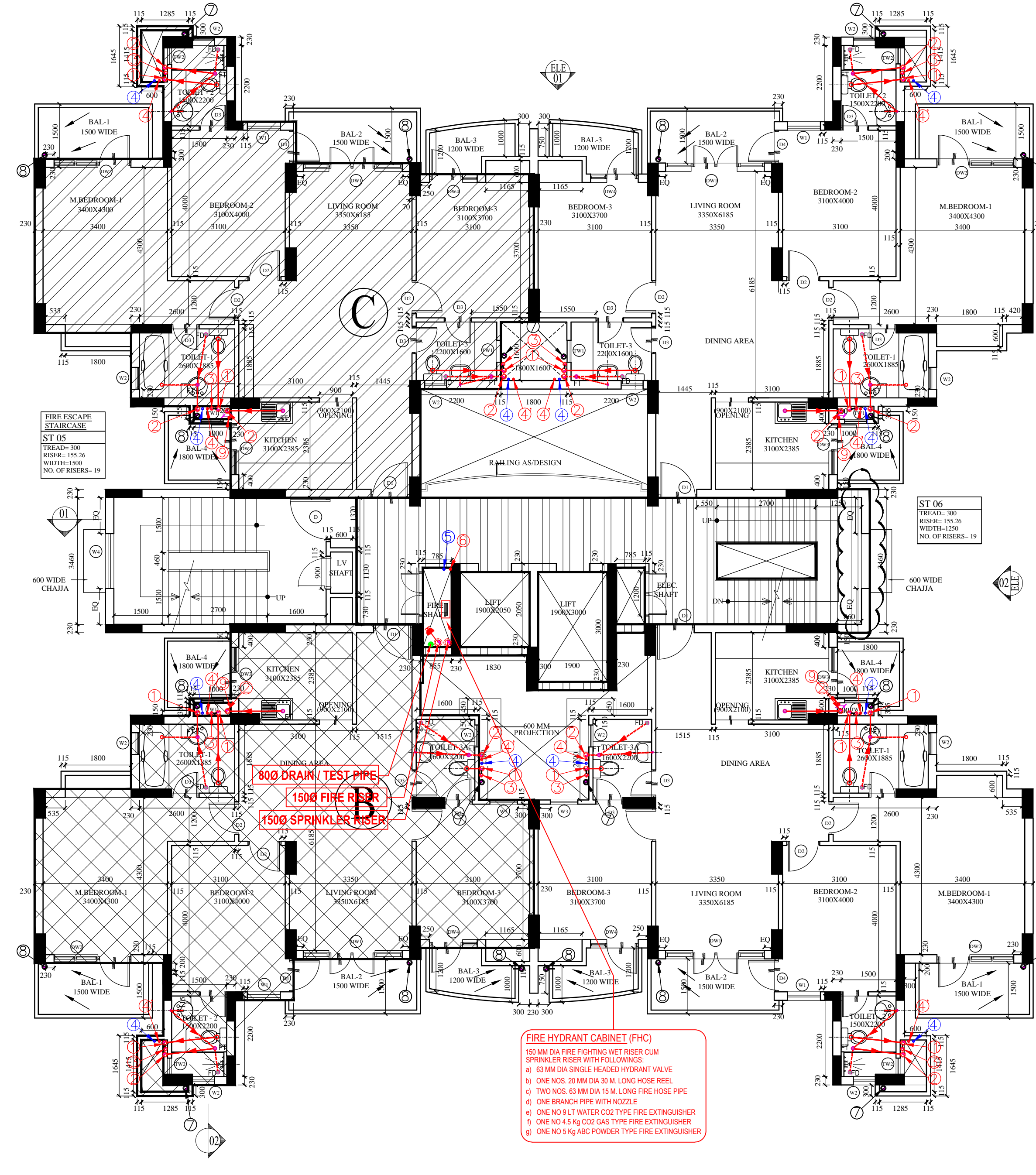
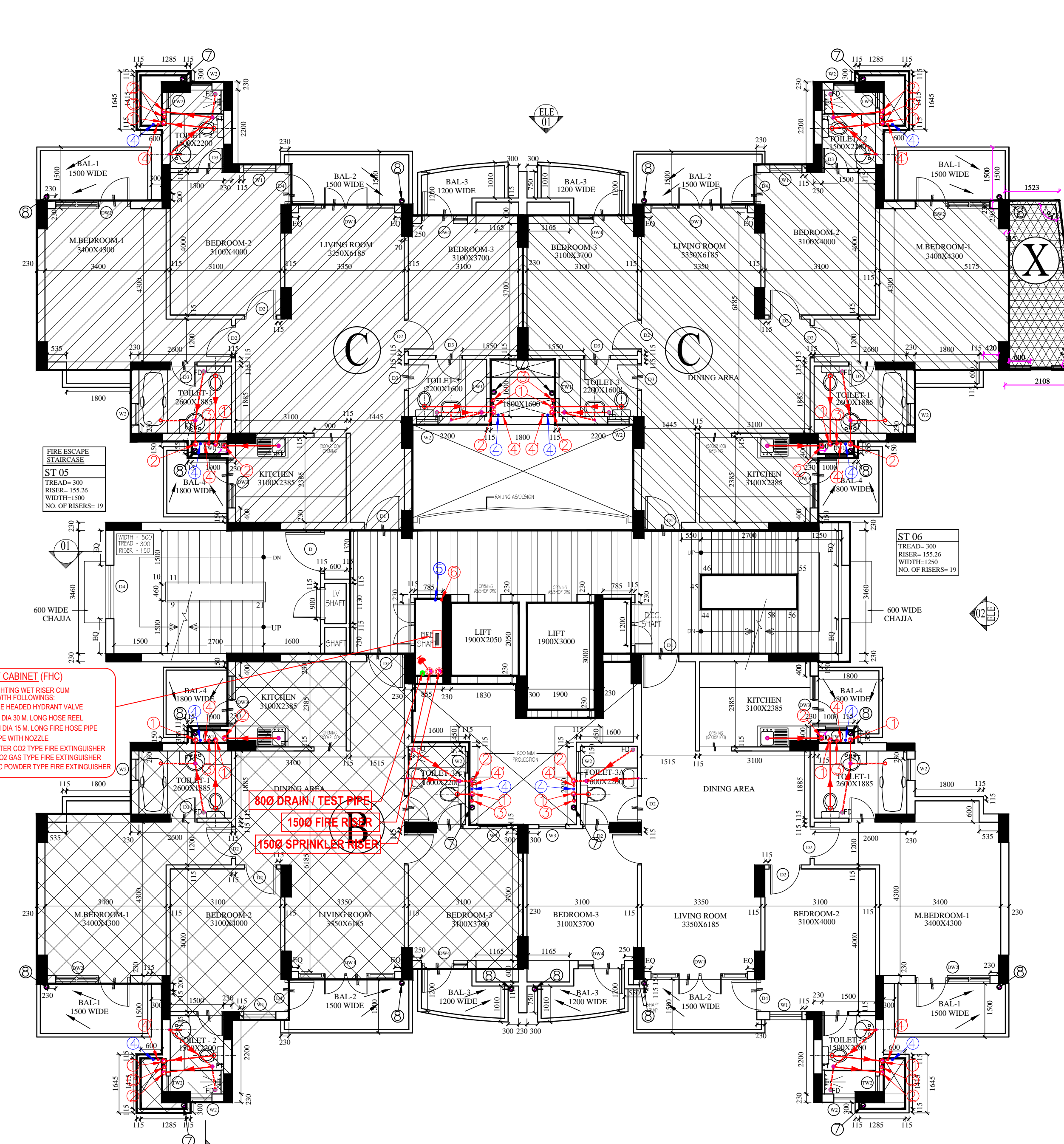


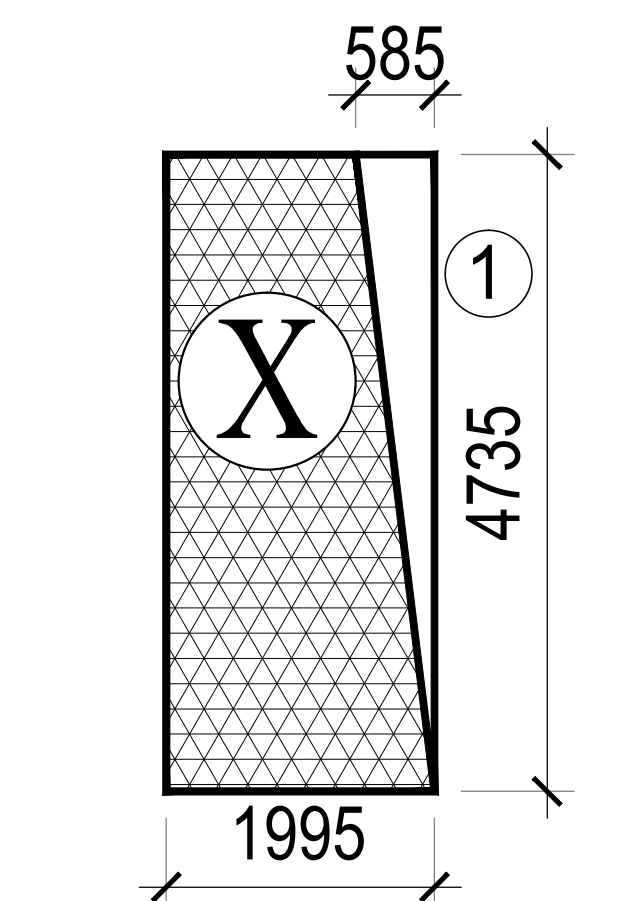
GROUND FLOOR PLAN



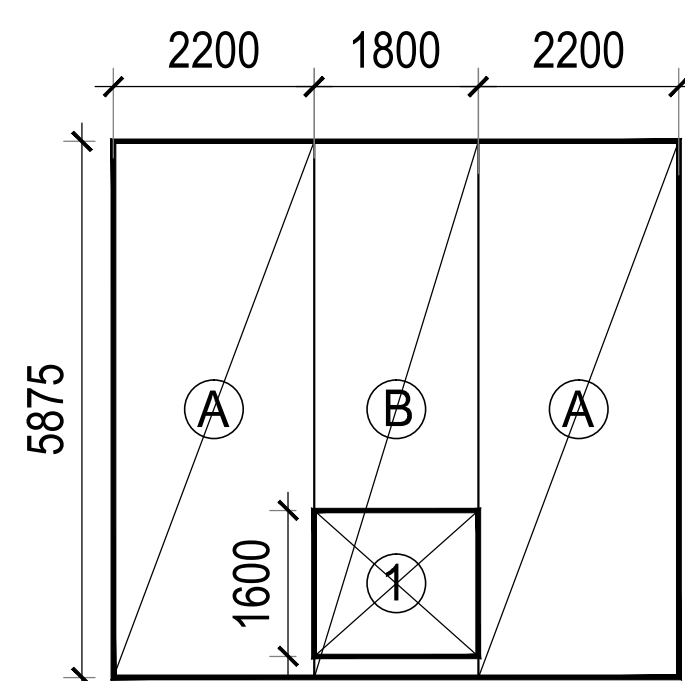
TYPICAL FLOOR PLAN



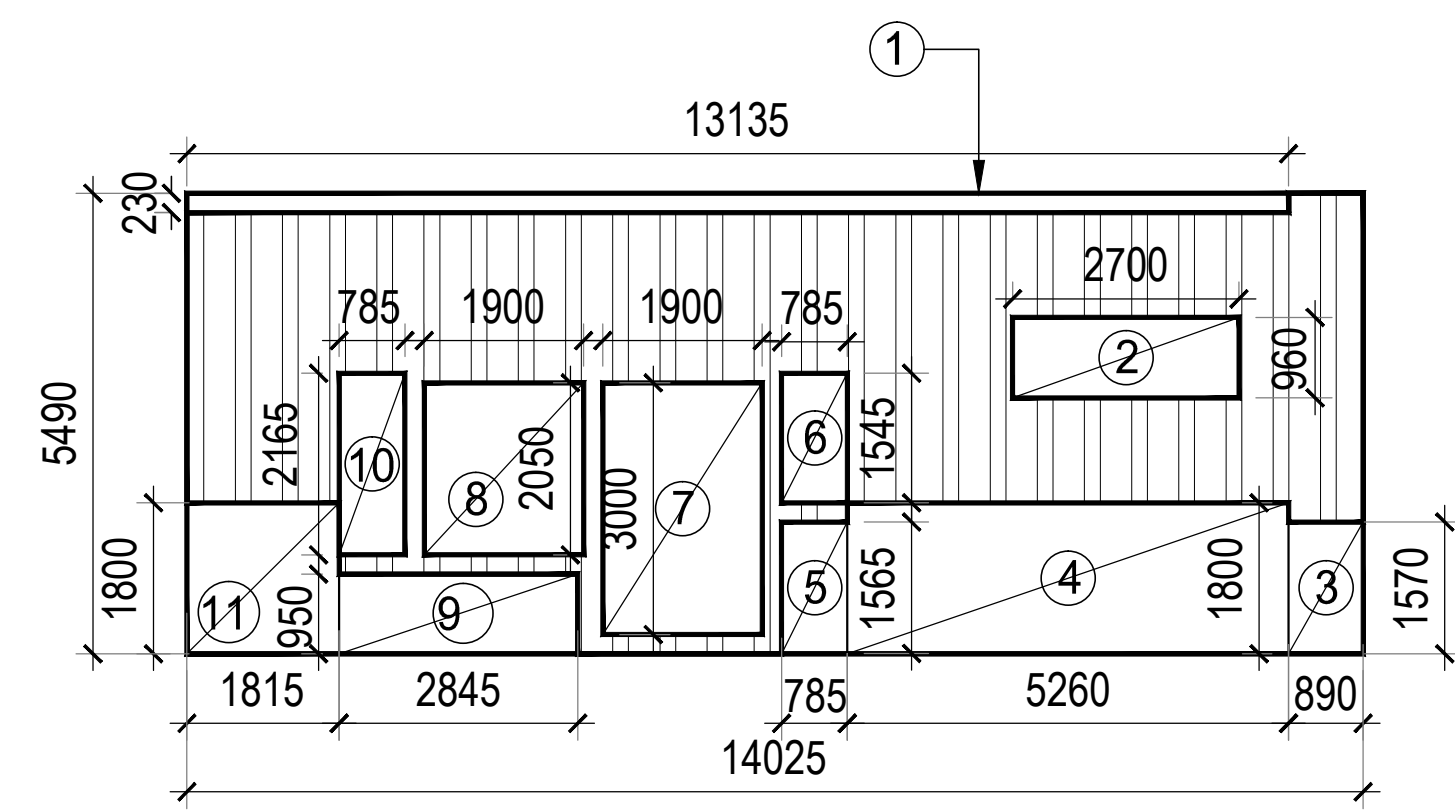
FOURTH FLOOR PLAN [ C1 ]



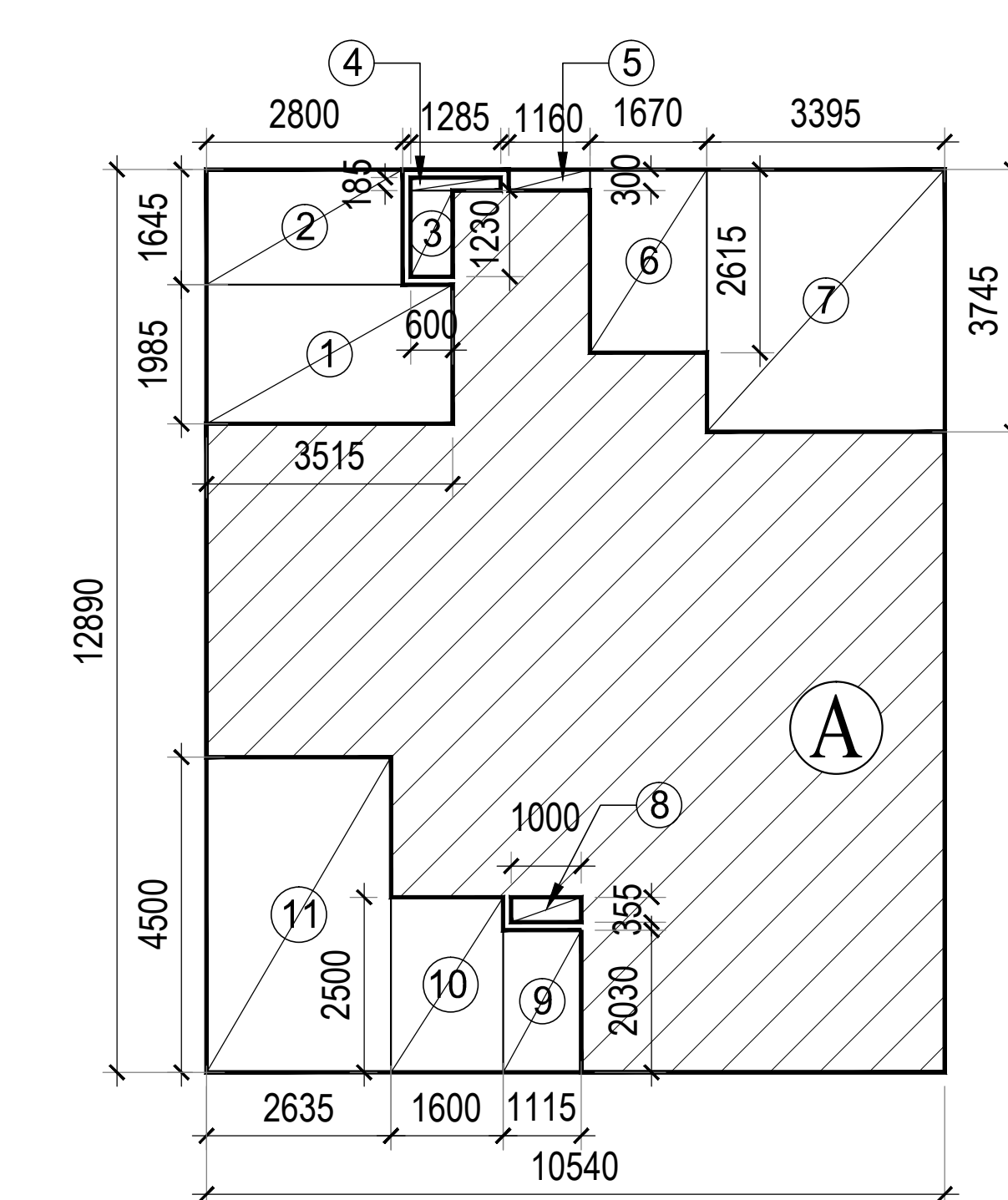
EXTRA FAR ON 4th FLOOR PLAN		C1
(AREAS IN sq mtrs.)		
FAR OF X	TOTAL AREA =	
	1.995 X 4.735 =	9.446 (i)
DEDUCTIONS		
1	0.5 X 0.585 X 4.735 =	1.385 X 1 = 1.385 (ii)
TOTAL AREA TO BE DEDUCTED		= 1.385
EXTRA FAR ON 4th FLOOR C1	=	(i) - (ii)
EXTRA FAR ON 4th FLOOR C1	=	8.061 sq mtrs.



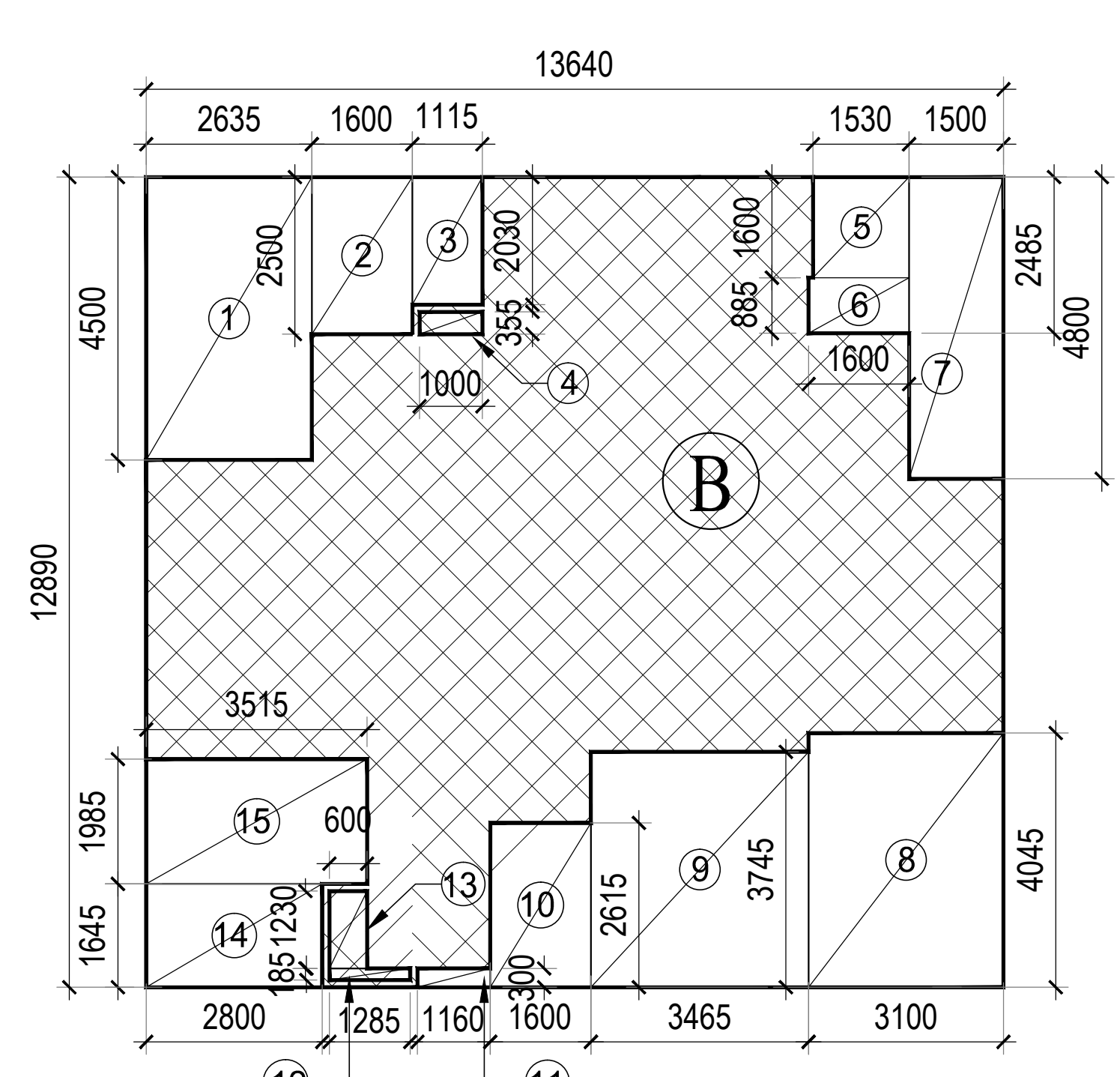
ENTRANCE LOBBY



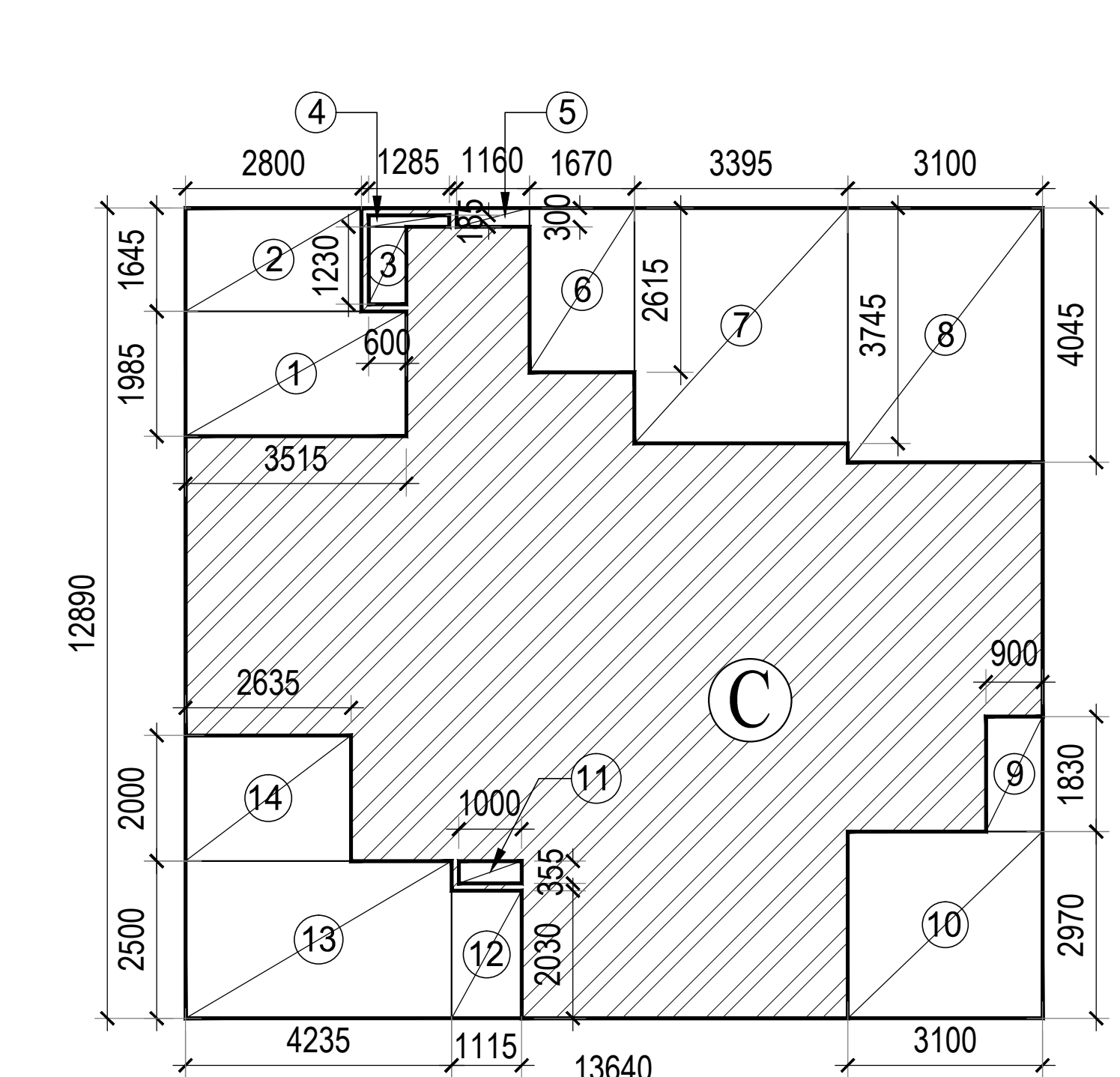
COMMON AREA



UNIT A (2BHK)		X 2 (ON GROUND FLOOR ONLY)
(AREAS IN sq mtrs.)		
TOTAL AREA =		
10.540 X 12.890 = 135.861 (i)		
DEDUCTIONS		
1	3.515 X 1.985 =	6.977 X 1 = 6.977
2	2.800 X 1.645 =	4.606 X 1 = 4.606
3	0.600 X 1.23 =	0.738 X 1 = 0.738
4	1.285 X 0.185 =	0.238 X 1 = 0.238
5	1.160 X 0.3 =	0.348 X 1 = 0.348
6	1.670 X 2.615 =	4.367 X 1 = 4.367
7	3.395 X 3.745 =	12.714 X 1 = 12.714
8	1.000 X 0.355 =	0.355 X 1 = 0.355
9	1.115 X 2.03 =	2.263 X 1 = 2.263
10	1.600 X 2.5 =	4.000 X 1 = 4.000
11	2.635 X 4.5 =	11.858 X 1 = 11.858
TOTAL AREA TO BE DEDUCTED		= 48.464 (ii)
AREA OF UNIT A =		(i) - (ii)
AREA OF UNIT A =		87.396 sq mtrs.



UNIT B (3BHK)		X (ON GROUND FLOOR & TYPICAL FLOOR)
(AREAS IN sq mtrs.)		
TOTAL AREA =		
13.640 X 12.890 = 175.820 (i)		
DEDUCTIONS		
1	2.635 X 4.500 =	11.858 X 1 = 11.858
2	1.600 X 2.500 =	4.000 X 1 = 4.000
3	1.115 X 2.030 =	2.263 X 1 = 2.263
4	1.000 X 0.355 =	0.355 X 1 = 0.355
5	1.530 X 1.600 =	2.448 X 1 = 2.448
6	1.600 X 0.885 =	1.416 X 1 = 1.416
7	1.500 X 4.800 =	7.200 X 1 = 7.200
8	3.100 X 4.045 =	12.540 X 1 = 12.540
9	3.465 X 3.745 =	12.976 X 1 = 12.976
10	1.600 X 2.615 =	4.184 X 1 = 4.184
11	1.16 X 0.3 =	0.348 X 1 = 0.348
12	1.285 X 0.185 =	0.238 X 1 = 0.238
13	0.600 X 1.230 =	0.738 X 1 = 0.738
14	2.800 X 1.645 =	4.606 X 1 = 4.606
15	3.515 X 1.985 =	6.977 X 1 = 6.977
TOTAL AREA TO BE DEDUCTED		= 72.147 (ii)
AREA OF UNIT B =		(i) - (ii)
AREA OF UNIT B =		103.673 sq mtrs.



UNIT C (3BHK)		X (ON TYPICAL FLOOR)
(AREAS IN sq mtrs.)		
TOTAL AREA =		
13.640 X 12.890 = 175.820 (i)		
DEDUCTIONS		
1	3.515 X 1.985 =	6.977 X 1 = 6.977
2	2.800 X 1.645 =	4.606 X 1 = 4.606
3	0.600 X 1.230 =	0.738 X 1 = 0.738
4	1.285 X 0.185 =	0.238 X 1 = 0.238
5	1.160 X 0.300 =	0.348 X 1 = 0.348
6	1.670 X 2.615 =	4.367 X 1 = 4.367
7	3.395 X 3.745 =	12.714 X 1 = 12.714
8	3.100 X 4.045 =	12.540 X 1 = 12.540
9	0.900 X 1.830 =	1.647 X 1 = 1.647
10	3.100 X 2.970 =	9.207 X 1 = 9.207
11	1.000 X 0.355 =	0.355 X 1 = 0.355
12	1.115 X 2.030 =	2.263 X 1 = 2.263
13	4.235 X 2.500 =	10.588 X 1 = 10.588
14	2.635 X 2.000 =	5.270 X 1 = 5.270
TOTAL AREA TO BE DEDUCTED		= 71.858 (ii)
AREA OF UNIT C =		(i) - (ii)
AREA OF UNIT C =		103.962 sq mtrs.

ENTRANCE LOBBY		X 1 (ON GROUND FLOOR ONLY)
(AREAS IN sq mtrs.)		
A	2.200 X 5.875 =	12.925 X 2 = 25.850
B	1.800 X 5.875 =	10.575 X 1 = 10.575
TOTAL		= 36.425 (i)
DEDUCTIONS		
1	1.8 X 1.6 =	2.880 X 1 = 2.880
TOTAL AREA TO BE DEDUCTED		= 2.880 (ii)
AREA OF ENTRANCE LOBBY		= (i) - (ii)
AREA OF ENTRANCE LOBBY		= 33.545 sq mtrs.
COMMON AREA (ON GROUND FLOOR)		
(AREAS IN sq mtrs.)		
TOTAL AREA =		
14.025 X 5.490 = 76.997 (i)		
DEDUCTIONS		
1	13.135 X 0.230 =	3.021 X 1 = 3.021
2	2.700 X 0.960 =	2.592 X 1 = 2.592
3	0.890 X 1.570 =	1.397 X 1 = 1.397
4	5.260 X 1.800 =	9.468 X 1 = 9.468
5	0.785 X 1.565 =	1.229 X 1 = 1.229
6	0.785 X 1.545 =	1.213 X 1 = 1.213
7	1.900 X 3.000 =	5.700 X 1 = 5.700
8	2.845 X 0.950 =	2.703 X 1 = 2.703
9	0.785 X 2.165 =	1.700 X 1 = 1.700
10	0.785 X 1.800 =	1.413 X 1 = 1.413
11	1.815 X 1.800 =	3.267 X 1 = 3.267
TOTAL AREA TO BE DEDUCTED		= 26.589 (ii)
AREA OF COMMON SPACES		= (i) - (ii)
AREA OF COMMON SPACES		= 50.408 sq mtrs.

COMMON AREA		(ON TYPICAL FLOOR)
(AREAS IN sq mtrs.)		
TOTAL AREA =		
14.025 X 5.490 = 76.997 (i)		
DEDUCTIONS		
1	13.135 X 0.230 =	3.021 X 1 = 3.021
2	2.700 X 0.960 =	2.592 X 1 = 2.592
3	0.890 X 1.570 =	1.397 X 1 = 1.397
4	5.260 X 1.800 =	9.468 X 1 = 9.468
5	0.785 X 1.565 =	1.229 X 1 = 1.229
6	0.785 X 1.545 =	1.213 X 1 = 1.213
7	1.900 X 3.000 =	5.700 X 1 = 5.700
8	2.845 X 0.950 =	2.703 X 1 = 2.703
9	0.785 X 2.165 =	1.700 X 1 = 1.700
10	0.785 X 1.800 =	1.413 X 1 = 1.413
11	1.815 X 1.800 =	3.267 X 1 = 3.267
TOTAL AREA TO BE DEDUCTED		= 36.184 (ii)
AREA OF COMMON SPACES		= (i) - (ii)
AREA OF COMMON SPACES		= 40.813 sq mtrs.

TOTAL FAR ON 4th FLOOR [C1]	
= [ 2 X AREA OF (B) ] + [ 2 X AREA OF (C) ] + COMMON AREA + EXTRA AREA ON 4th FLOOR	
= [ 2 X 103.673 ] + [ 2 X 103.962 ] + 40.813 + 8.061	
= 207.34545 + 207.9237 + 40.813 + 8.061	
= 464.144 mtrs.	

TOTAL FAR ON TYPICAL FLOOR	
= [ 2 X AREA OF (B) ] + [ 2 X AREA OF (C) ] + COMMON AREA	
= [ 2 X 103.673 ] + [ 2 X 103.962 ] + 40.813	
= 207.34545 + 207.9237 + 40.813	
= 456.082 mtrs.	

TOTAL FAR ON GROUND FLOOR	
= [ 2 X AREA OF (A) ] + [ 2 X AREA OF (B) ] + COMMON AREA + ENTRANCE LOBBY	
= [ 2 X 36.425 ] + [ 2 X 103.673 ] + 50.408 + 33.545	
= 174.79265 + 207.3455 + 50.408 + 33.545	
= 466.091 mtrs.	

- LEGEND: -
- | SYMBOL | DESCRIPTION  |
|--------|--|
| (1)    | 110Ø OD uPVC SP STACK  |
| (2)    | 110Ø OD uPVC WP STACK  |
| (3)    | 75Ø A.S.P  |
| (4)    | DWS D/TAKE   |
| (5)    | FWS D/TAKE   |
| (6)    | 50Ø DWS RISER  |
| (7)    | 50Ø FLUSHING RISER   |
| (8)    | 110Ø OD uPVC R.W.P   |
| (9)    | 75Ø Ø uPVC DRAIN PIPE(BALCONY)                               |
| (10)   | SOLAR HOT WATER SUPPLY D/TAKE FOR TOP FOUR FLOOR PLAN TOILET |