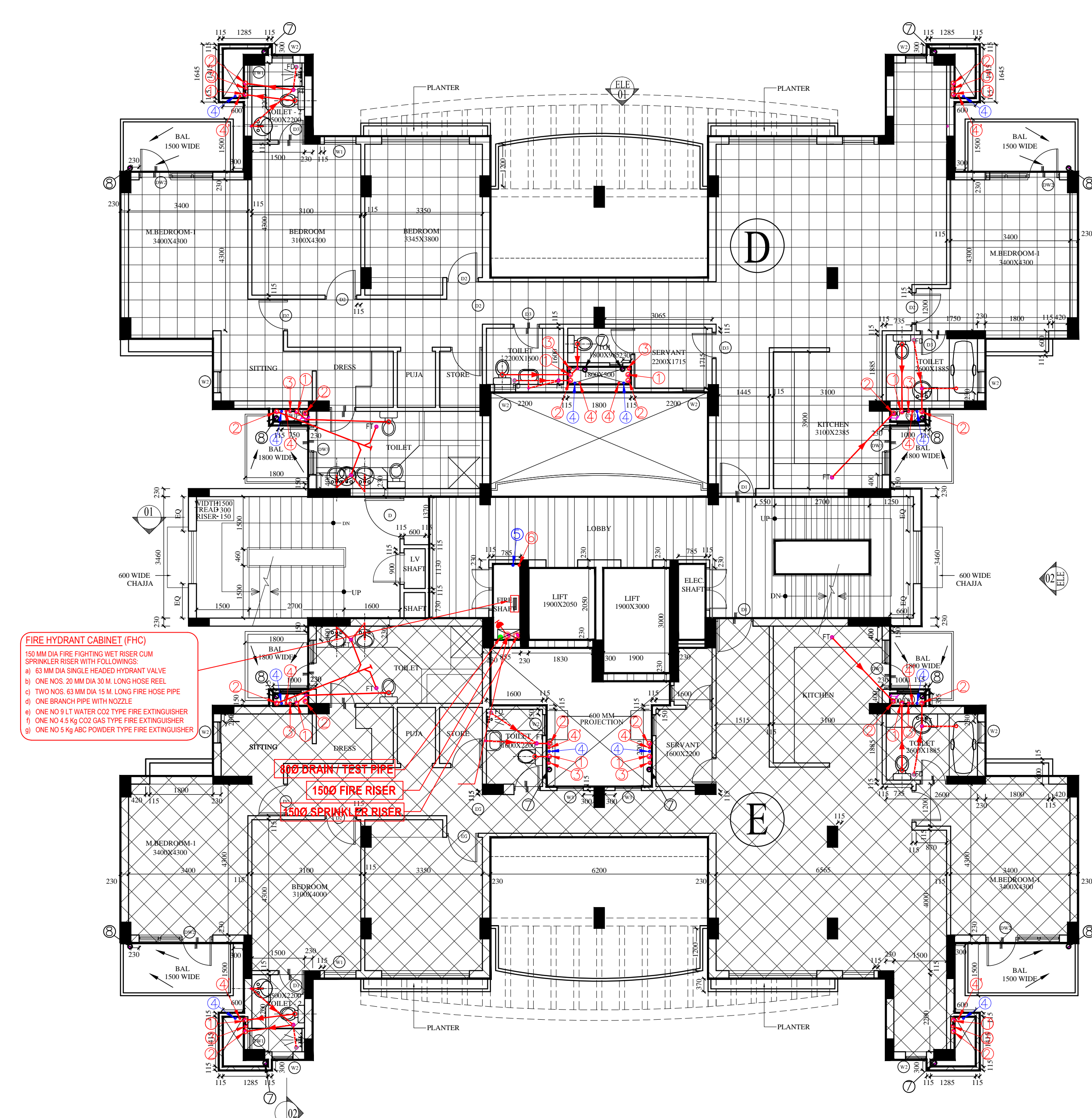
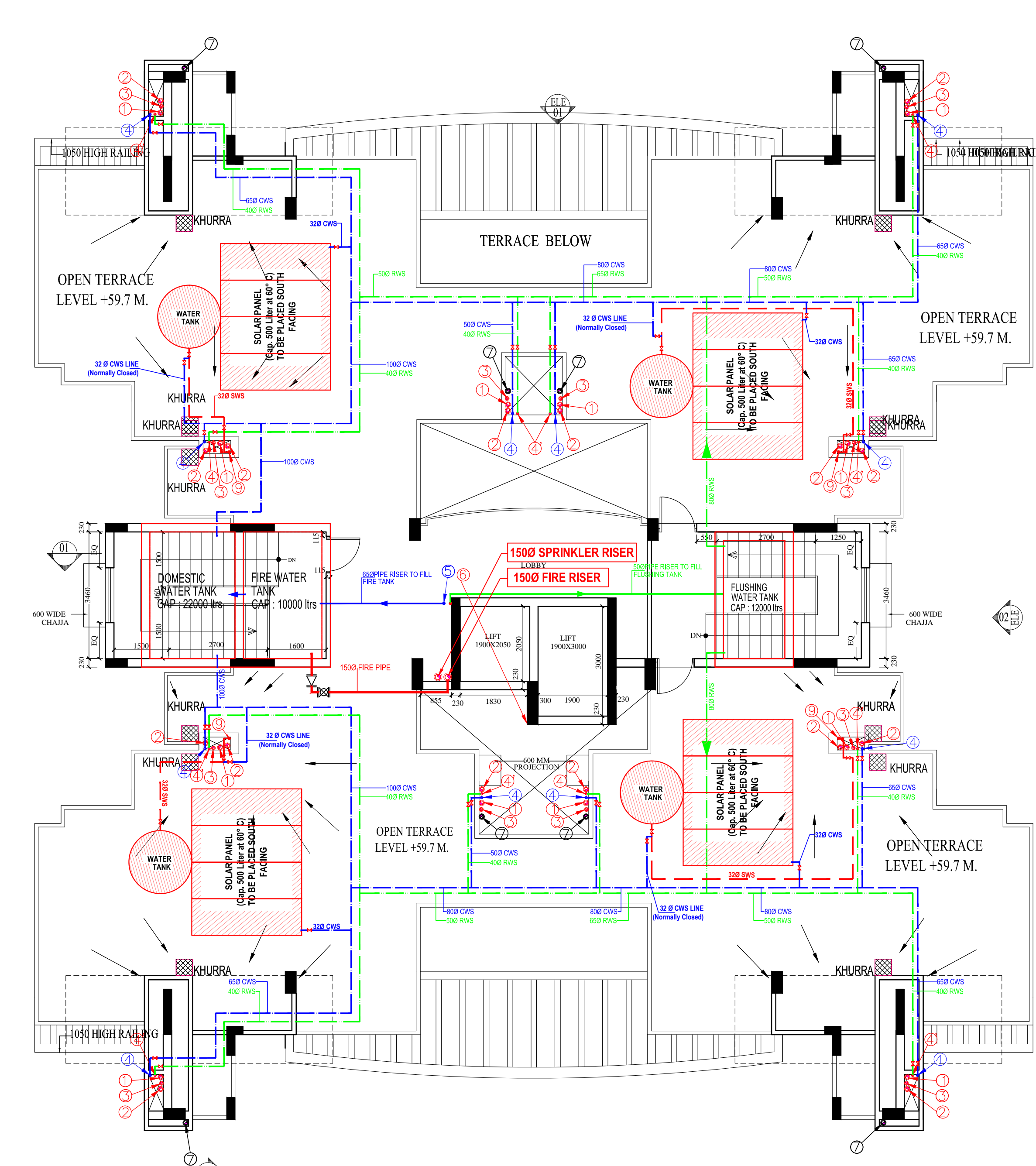


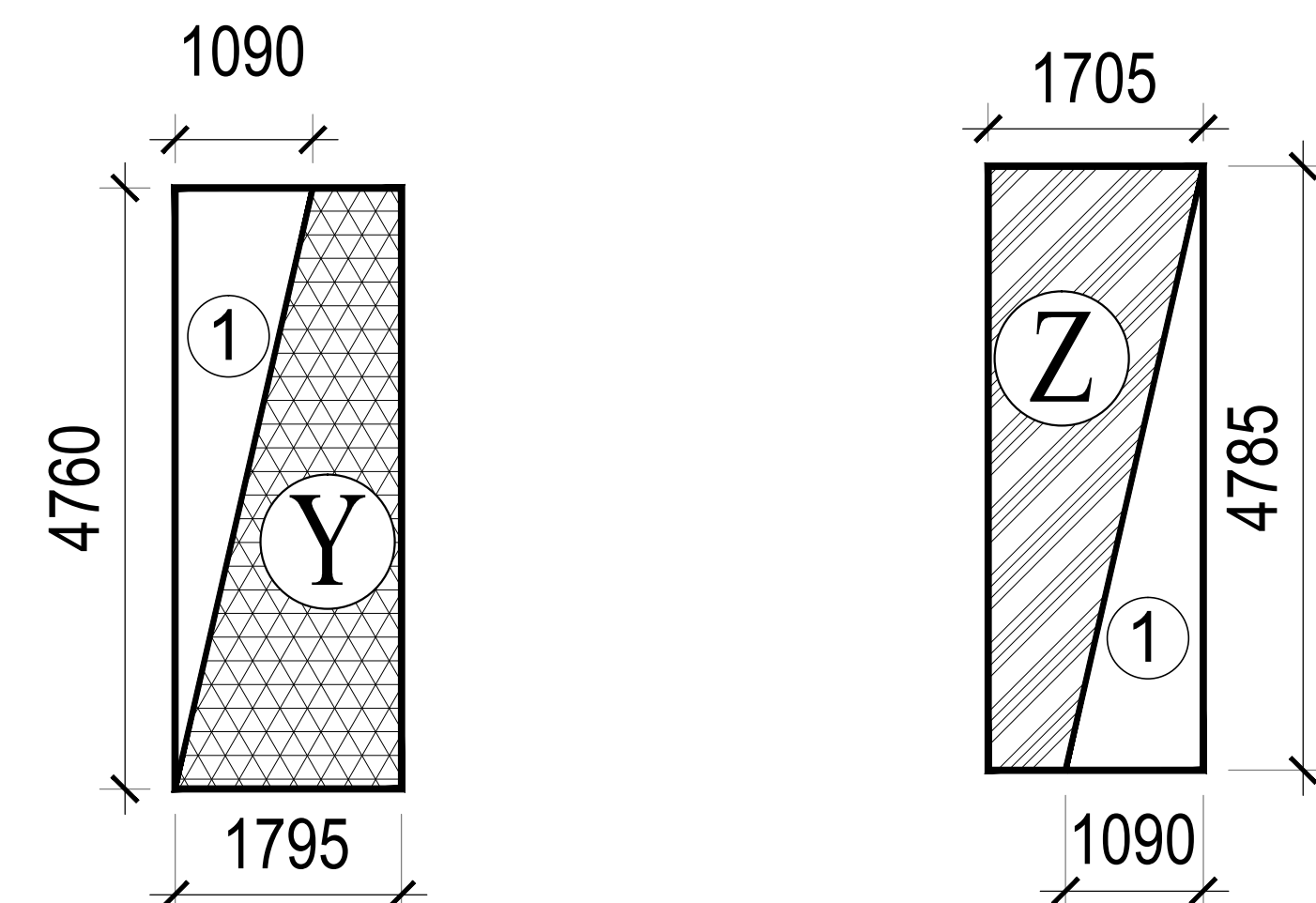
FOURTH FLOOR PLAN [C2]



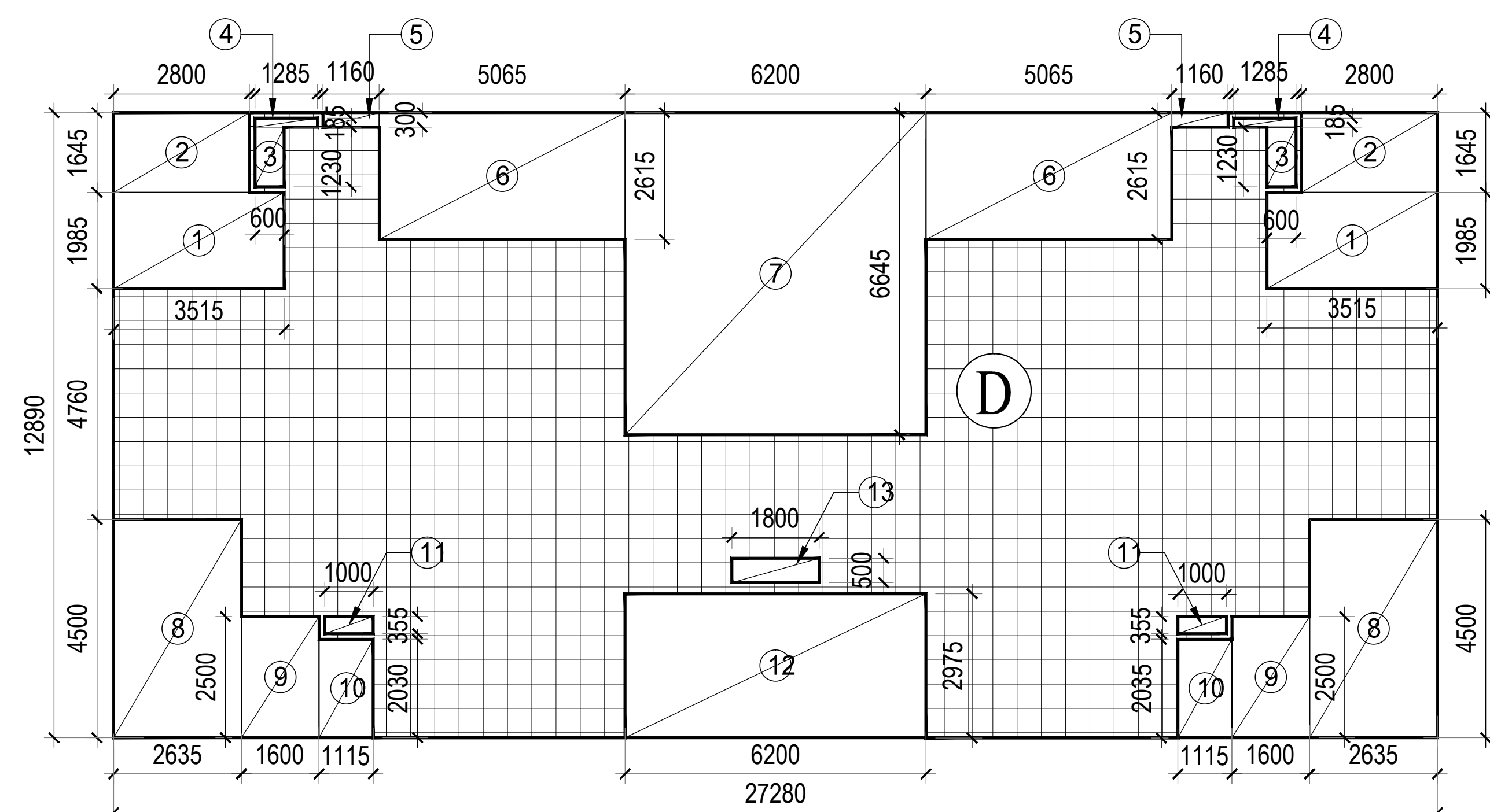
19th FLOOR PLAN



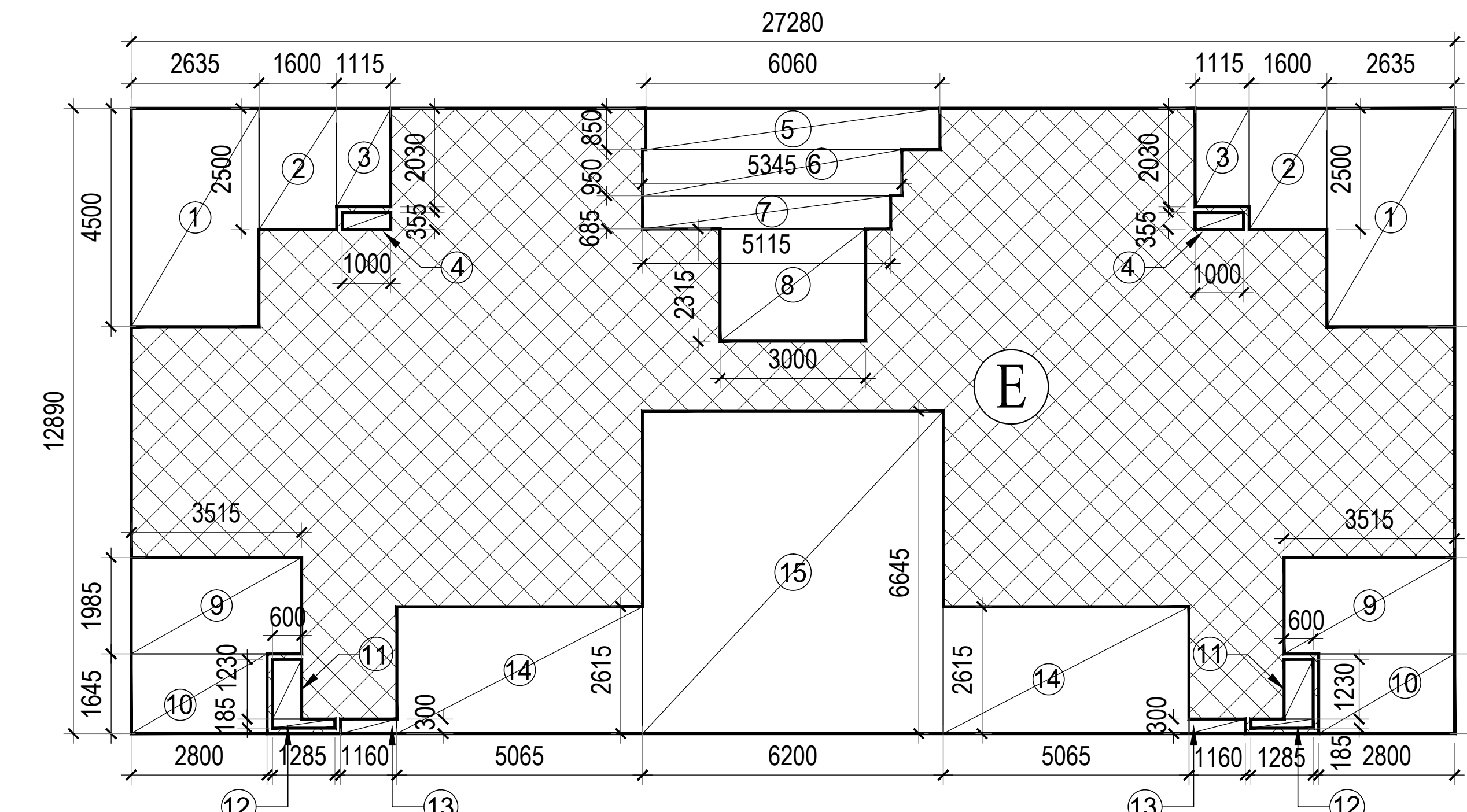
TERRACE FLOOR PLAN



C2	
FAR OF Y	
TOTAL AREA =	1.795 X 4.760 = 8.544 (i)
DEDUCTIONS	
1 0.5 X 1.090 X 4.760 = 2.594 X 1 = 2.594	
TOTAL AREA TO BE DEDUCTED	= 2.594 (ii)
FAR OF Y = (i) - (ii)	
FAR OF Y =	5.950 sq mtrs.
FAR OF Z	
TOTAL AREA =	1.705 X 4.785 = 8.158 (i)
DEDUCTIONS	
1 0.5 X 1.090 X 4.785 = 2.608 X 1 = 2.608	
TOTAL AREA TO BE DEDUCTED	= 2.608 (ii)
FAR OF Z = (i) - (ii)	
FAR OF Z =	5.551 sq mtrs.
EXTRA FAR ON 4th FLOOR C2 = FAR OF a + FAR OF b	
EXTRA FAR ON 4th FLOOR C2 =	11.501 sq mtrs.



UNIT D (PENTHOUSE 1) X 1 (ON TOP FLOOR)	
(AREAS IN sq mtrs.)	
TOTAL AREA =	27.280 X 12.890 = 351.639 (i)
DEDUCTIONS	
1 3.515 X 1.985 = 6.977 X 2 = 13.955	
2 2.800 X 1.645 = 4.606 X 2 = 9.212	
3 0.600 X 1.230 = 0.738 X 2 = 1.476	
4 1.285 X 0.185 = 0.238 X 2 = 0.475	
5 1.160 X 0.300 = 0.348 X 2 = 0.696	
6 5.065 X 2.615 = 13.245 X 2 = 26.490	
7 6.200 X 6.645 = 41.199 X 1 = 41.199	
8 2.635 X 4.500 = 11.858 X 2 = 23.715	
9 1.600 X 2.500 = 4.000 X 2 = 8.000	
10 1.115 X 2.035 = 2.269 X 2 = 4.538	
11 1.000 X 0.355 = 0.355 X 2 = 0.710	
12 6.200 X 2.975 = 18.445 X 1 = 18.445	
13 1.800 X 0.500 = 0.900 X 1 = 0.900	
TOTAL AREA TO BE DEDUCTED	= 149.811 (ii)
AREA OF UNIT D = (i) - (ii)	
AREA OF UNIT D =	201.828 sq mtrs.



UNIT E (PENTHOUSE 2) X 1 (ON TOP FLOOR)	
(AREAS IN sq mtrs.)	
TOTAL AREA =	27.280 X 12.890 = 351.639 (i)
DEDUCTIONS	
1 2.635 X 4.500 = 11.858 X 2 = 23.715	
2 1.600 X 2.500 = 4.000 X 2 = 8.000	
3 1.115 X 2.030 = 2.263 X 2 = 4.527	
4 1.000 X 0.355 = 0.355 X 2 = 0.710	
5 6.060 X 0.850 = 5.151 X 1 = 5.151	
6 5.345 X 0.950 = 5.078 X 1 = 5.078	
7 5.115 X 0.685 = 3.504 X 1 = 3.504	
8 3.000 X 2.315 = 6.945 X 1 = 6.945	
9 3.515 X 1.985 = 6.977 X 2 = 13.955	
10 2.800 X 1.645 = 4.606 X 2 = 9.212	
11 0.600 X 1.230 = 0.738 X 2 = 1.476	
12 1.285 X 0.185 = 0.238 X 2 = 0.475	
13 1.160 X 0.300 = 0.348 X 2 = 0.696	
14 5.065 X 2.615 = 13.245 X 2 = 26.490	
15 6.200 X 6.645 = 41.199 X 1 = 41.199	
TOTAL AREA TO BE DEDUCTED	= 151.132 (ii)
AREA OF UNIT E = (i) - (ii)	
AREA OF UNIT E =	200.507 sq mtrs.

PLUMBING LEGEND

①	110# OD uPVC SP STACK
②	110# OD uPVC WP STACK
③	75# A.S.P
④	DWS D/TAKE
⑤	FWS D/TAKE
⑥	65# DWS RISER
⑦	50# FLUSHING RISER
⑧	110# OD uPVC R.W.P
⑨	75# uPVC DRAIN PIPE(BALCONY)
⑩	SOLAR HOT WATER SUPPLY D/TAKE FOR TOP FOUR FLOOR PLAN TOILET

LEGEND -

SYMBOL	DESCRIPTION
—	SOIL PIPE
—	WASTE PIPE
⊙	FLOOR TRAP
⊙	CUTOUT
⊙	FLOOR DRAIN
—	CWS PIPE
—	FWS PIPE
—	CONTROL VALVE
—	FIRE PIPE
—	SOLAR HOT WATER SUPPLY PIPE

TOTAL FAR ON 4th FLOOR [C2]

= [2 X AREA OF (B)] + [2 X AREA OF (C)] + COMMON AREA+EXTRA AREA ON 4th FLOOR
= [2 X 103.673] + [2 X 103.962] + 40.813 + 11.501
= 207.34545 + 207.9237 + 40.813 + 11.501
= 467.583 mtrs.

TOTAL FAR ON 4th FLOOR [C3]

= AREA ON TYPICAL FLOOR

TOTAL FAR ON 19th FLOOR

= [AREA OF (D)] + [AREA OF (E)] + COMMON AREA
= [1 X 201.828] + [1 X 200.507] + 40.813
= 201.8282 + 200.5068 + 40.813
= 443.148 mtrs.